

MINUTES OF REGULAR MEETING
EAST MONTGOMERY COUNTY IMPROVEMENT DISTRICT
July 12, 2012

THE STATE OF TEXAS §
 §
COUNTY OF MONTGOMERY §

The Board of Directors of East Montgomery County Improvement District (the "District") met in Regular Session, open to the public, on the 12th day of July, 2012, at 6:30 p.m., at the East Montgomery County Improvement District Complex, 21575 U.S. Highway 59 North, EMCID Board Room 103, New Caney, Texas, within the boundaries of the District, and the roll was called of the duly elected officers and members of the Board of Directors, to-wit:

Vickie Thumann	Vice Chair
Linda W. Floyd	Assistant Vice Chair/Treasurer
Connie Bloodworth	Assistant Secretary
Fred Wetz	Director
Isidor Ybarra, Jr.	Director
Marlene Idoux	Director
Dale Martin	Director
Brenda Webb	Director

with all of said persons being present, thus constituting a quorum.

Also present were Mr. Frank McCrady, Ms. Suzanne Parmer, Ms. Kara Richardson, Mr. Cory Burton, Mr. Joe Costanza, Ms. Virginia Blake and several others from the community, as reflected on the attached Audience Sign-In Sheet.

The Vice Chair called the meeting to order and announced that a quorum was present. Director Wetz led in prayer followed by the pledge of allegiance led by Director Ybarra. Director Bloodworth next welcomed the new Board members.

As the first order of business, the Board considered comments from members of the audience. In connection therewith, Ms. Linda Matcek and Ms. JoAnne Moreland, students of the Academy for Lifelong Learning addressed the Board and distributed the attached proposal to the Board requesting use of the Board room at the District complex for hour long yoga classes for senior citizens.

Minutes of East Montgomery County Improvement District for July 12, 2012

Mr. Martin Wise next addressed the Board and welcomed the new board members. He requested that the District website be updated monthly with the approved minutes and monthly bookkeeper's reports and that the EarthQuest project be deferred.

Director Floyd entered the meeting at this time.

The Board next considered the election of officers of the Board of Directors. In connection therewith, Mr. McCrady stated that he had received calls from a few board members requesting that the Board hold a workshop meeting prior to the election of officers so that the new board members could meet all of the current board members and learn more about how the board operates. Director Wetz then made a motion to defer the election of officers until the next meeting so that the Board would have the opportunity to meet everyone and learn more before making a decision on officers. Director Ybarra seconded said motion, which failed by a vote of 4 in favor and 4 opposed with Directors Wetz, Thumann, Martin and Ybarra voting in favor and Directors Floyd, Bloodworth, Idoux, and Webb voting in opposition to the motion.

Director Thumann next opened the floor for nominations for Chair of the Board. In that regard, Director Ybarra nominated Director Wetz and Director Idoux nominated Director Bloodworth for such position. Director Webb then suggested that the Board elect a slate of candidates rather than electing each officer individually, and she made a motion to nominate Director Bloodworth for Chair, Director Floyd for Vice Chair, Director Idoux for Secretary, Director Martin for Assistant Secretary and Director Webb for Treasurer. Director Floyd seconded said motion. Director Martin then declined the nomination for Assistant Secretary, and Director Webb then nominated Director Thumann for Assistant Secretary who also declined the nomination. Director Webb next nominated Director Ybarra for Assistant Secretary who also declined the nomination. Director Webb next nominated Director Wetz for Assistant Secretary who also declined the nomination. Director Webb then amended her original motion to remove all nominations for the position of Assistant Secretary. Director Floyd seconded the amended motion, which carried by a vote of 5 in favor and 3 opposed with Directors Bloodworth, Floyd, Idoux, Martin and Webb voting in favor and Directors Thumann, Ybarra and Wetz voting in opposition to the amended motion.

Director Bloodworth then assumed the chair of the meeting.

Minutes of East Montgomery County Improvement District for July 12, 2012

The Board next considered the approval of the minutes of the Board of Directors meetings held on June 14, 2012 and June 28, 2012. Director Idoux moved that the minutes of the Board of Directors meetings held on June 14, 2012 and June 28, 2012, be approved as written. A discussion then followed relative to various revisions required. After discussion, Director Idoux amended her original motion to approve the minutes of June 14, 2012 and June 28, 2012 meetings, as revised. Director Martin seconded said motion, which carried by a vote of 6 in favor, 1 opposed and 1 abstention, with Directors Bloodworth, Floyd, Martin, Thumann, Webb and Idoux voting in favor, Director Wetz voting in opposition and Director Ybarra abstaining from the vote.

The Board next considered the review and approval of a Sales Tax Report (the "Report") for Montgomery County Emergency Services District No. 6 and Montgomery County Emergency Services District No. 7 for the fiscal year ending June 30, 2012. In connection therewith, Ms. Blake presented and reviewed the attached Report with the Board. Director Floyd asked Ms. Blake how much the Report cost the District to prepare. Ms. Blake advised that she did not know the exact cost, but that McCall Gibson Swedlund Barfoot PLLC ("McCall") billed at the hourly rate that was represented in the engagement letter for the preparation of such Report. Director Floyd next stated that she believes that ESD No. 6 and ESD No. 7 should share in the costs of such Report and to defer approval of the Report until the Board knows the cost of the preparation of same. Director Floyd then made a motion to defer the approval of the Report, pending receipt and review of an invoice relative to the preparation of same. Director Webb seconded said motion, which failed by a vote of 4 in favor and 4 against with Directors Floyd, Webb, Idoux and Bloodworth voting in favor and Directors Martin, Wetz, Thumann and Ybarra voting in opposition to such motion. Director Martin next clarified the action contemplated by the agenda item and noted that it merely contemplates that the Board would consider the approval of the Report as opposed to the approval of the payment of any costs associated with the preparation of same. Director Martin pointed out that the Report has already been completed, and recommended that the Board approve the Report as presented. Director Martin then made a motion to approve the Report. It was next requested that a fee estimate be included in the engagement letter. Director Wetz seconded said motion, which unanimously carried.

Minutes of East Montgomery County Improvement District for July 12, 2012

The Board next considered the financial and investment reports, and authorizing payment of invoices presented. In connection therewith, Mr. Burton presented the financial and investments reports, copies of which are attached hereto, and presented the invoices for payment. Following review, Director Idoux moved that said reports be approved as presented. Director Webb seconded said motion, which unanimously carried. Director Webb next moved that payment of invoices be authorized on the Operating Fund being check nos. 9669 through 9721, inclusive, with check nos. 9669, 9678 and 9688 being voided, debits for payroll and two (2) wires, and on the Special Events Fund at Plains State Bank being check no. 2293, as set forth on the attached reports. Director Martin seconded said motion, which unanimously carried.

The Board next considered the status of development of the District's 12.85 acre site, including the construction of improvements and the leasing of space in the District's office building. In connection therewith, Mr. McCrady stated that he had nothing new to report.

The Board next recessed to Executive Session at 7:24 p.m. to discuss real property matters pursuant to §551.072, Texas Government Code, pending or contemplated litigation pursuant to §551.071, Texas Government Code, and matters in which the duty of the attorney to the District under the Texas Disciplinary Rules of Professional Conduct of the State Bar of Texas clearly conflict with Chapter 551, Texas Government Code, pursuant to §551.071, Texas Government Code. The Board returned from Executive Session at 8:55 p.m.

The Board next considered a report on activities within the Industrial Park, including the approval of a Purchase and Sale Agreement with Petroleum Oil Tools, Inc. ("Petroleum"). After discussion on the matter, Director Floyd moved that the Board approve the Purchase and Sale Agreement with Petroleum. Director Webb seconded said motion, which unanimously carried.

The Board next considered the approval of a Purchase and Sale Agreement relative to WorldFab, Inc. ("WorldFab"). After discussion on the matter, Director Floyd moved that the Board approve the Purchase and Sale Agreement with WorldFab. Director Webb seconded said motion, which unanimously carried.

The Board next considered matters for possible placement on future agendas. In that regard, Mr. McCrady noted that he will not be in town for the next regularly scheduled meeting and requested that the regular meeting scheduled for August 9, 2012, be rescheduled to August 21, 2012. The Board concurred with such request and further concurred to schedule a workshop meeting for

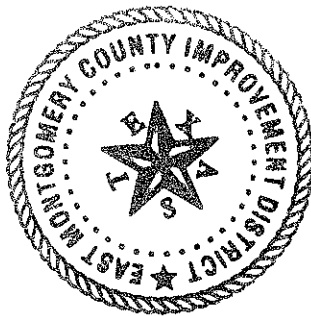
Minutes of East Montgomery County Improvement District for July 12, 2012

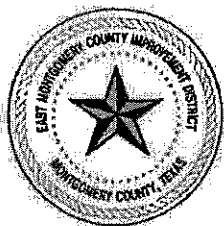
July 24, 2012, at 6:30 p.m.

There being no further business to come before the Board of Directors, Director Webb moved that the meeting be adjourned. Director Floyd seconded said motion, which unanimously carried.

(SEAL)

Marlene Adony
Secretary, Board of Directors





EAST MONTGOMERY COUNTY IMPROVEMENT DISTRICT

21575 U.S. Hwy 59 North, Suite 200 • P.O. Box 1019 • New Caney, Texas 77357-1019

Telephone: 281.354.4419 • Facsimile: 281.354.4529

Email Address: fmccrady@emctx.com / sparker@emctx.com / sseelye@emctx.com

Web Address: www.emctx.com

Regular Board Meeting Audience Sign-In Sheet

Date: July 12, 2012

NAME	ADDRESS	TELEPHONE NUMBER
Leonard Regan		
Andy Dell		
Jon Unterreiner		
Linda Mateck		
Jeanne Moreland		
Conny Webb		
Chase Cook		
Geoffrey Beige	The Tribune	
Cathy Blythe		
Carter Johnson		
Michael Truitt		
Melinda Ludwick		
Mark Wise		
WAYNE BLOOMER		

Academy for Lifelong Learning proposal for use of a room at EMCID facility:

ALL has three very successful yoga classes held weekly for their members. The community room at the library is not longer available, so we are asking to use the EMCID meeting room as it is not being used during the day. There are three instructors who are donating their time and this is a very beneficial program for the members.

The classes will begin in September, running Sept. thru Nov, then Jan. thru May. The times are Monday: 9:30 – 10:30, Wednesday: 1 – 2 and Thursday: 10 – 11.

Members will move furniture when necessary and replace it as they found it. There will be no food in the class.

Thank you for considering this proposa

Revised Draft

EAST MONTGOMERY COUNTY IMPROVEMENT DISTRICT
REPORT ON APPLYING AGREED-UPON PROCEDURES TO
SALES TAX CALCULATIONS TO COMPLY WITH AGREEMENTS FOR
MONTGOMERY COUNTY EMERGENCY SERVICES DISTRICT NO. 7 AND
MONTGOMERY COUNTY EMERGENCY SERVICES DISTRICT NO. 6

JULY 12, 2012

TABLE OF CONTENTS

	<u>SCHEDULE</u>
INDEPENDENT ACCOUNTANT'S REPORT ON APPLYING AGREED-UPON PROCEDURES	
SCHEDULE OF SALES TAX CALCULATION TO COMPLY WITH AGREEMENT FOR MONTGOMERY COUNTY EMERGENCY SERVICES DISTRICT NO. 7	A
SCHEDULE OF SALES TAX CALCULATION TO COMPLY WITH AGREEMENT FOR MONTGOMERY COUNTY EMERGENCY SERVICES DISTRICT NO. 6	B
MAP OF DISTRICT AND EMERGENCY SERVICES DISTRICT BOUNDARIES	C

13100 Wortham Center Drive
Suite 235
Houston, Texas 77065-5610
(713) 462-0341
Fax (713) 462-2708
E-Mail: mgsb@mgsbpllc.com

111 Congress Avenue
Suite 400
Austin, Texas 78701
(512) 610-2209
www.mgsbpllc.com

July 12, 2012

Board of Directors
East Montgomery County Improvement District
Montgomery County, Texas

Independent Accountant's Report
on Applying Agreed-Upon Procedures

We have performed the procedures enumerated below, which were agreed to by the Board of Directors of East Montgomery County Improvement District (the "District"), on the sales tax calculations to comply with the agreements with Montgomery County Emergency Services District No. 7 ("ESD 7") and Montgomery County Emergency Services District No. 6 ("ESD 6"). The responsible parties for this report are the intended users of the report. The below listed procedures were performed solely to assist you in evaluating the reasonableness of those costs as requested by the Board of Directors of the District, and the report is not to be used for any other purpose.

This engagement to apply agreed-upon procedures was performed in accordance with attestation standards established by the American Institute of Certified Public Accountants. The sufficiency of the procedures is solely the responsibility of the Board of Directors of the District. Consequently, we make no representation regarding the sufficiency of the procedures either for the purpose for which this report has been requested or for any other purpose. The procedures we performed are as summarized below:

- A. We reviewed certain schedules of sales tax revenue by zone in substantiation of the donations made to ESD 7 and ESD 6 in accordance with the agreements from sales tax zone reports from the State of Texas Comptroller's Office.
- B. We have read the agreements between the District and ESD 7 and ESD 6. The agreements reviewed are referenced in our report.

- C. In our prior report dated September 15, 2011, we verified that the Sales and Use Tax Election passed on November 3, 2009 and reviewed the sales tax zone descriptions from the Comptroller's website to verify what was included in the ESD and District listings.
- D. We reviewed the prior year annual financial reports for ESD 7 and ESD 6, and verified their expenditures were in accordance with the respective agreements.
- E. We reviewed the amounts collected by the state for sales taxes within each zone on a summary report. We then adjusted the excluded zones in accordance with the agreement, and compared that to the amounts paid by the District to the respective ESD.
- F. We calculated the amount of sales taxes available for each entity based on the sales tax reports available, and compared that to the payments by the District provided by the District's bookkeeper.
- G. A draft of our report was provided to the District's Attorney, Bookkeeper, ESD 7 and ESD 6 in accordance with the respective agreements.
- H. We prepared for submittal to the Board of Directors of the District our report detailing the calculated donation amounts in accordance with the respective agreements.

The attached Schedule A titled "Schedule of Sales Tax Calculation to Comply with the Agreement for Montgomery County Emergency Services District No. 7" sets forth their sales tax calculation. This reimbursement is in accordance with the terms and conditions of an agreement dated September 22, 2009 between the District and ESD 7. Under that agreement, the monthly donation is to be determined by calculating the actual amount ESD 7 would have received from .25% sales tax collected within the District boundaries, adjusted by amounts collected in Economic Development Zone No. 2 (EDZ 2) and areas where the maximum sales tax rate was already in effect. Also under that agreement an additional monthly grant of \$6,250 is due until twelve consecutive monthly donations is equal to or greater than \$263,000.

A separate agreement dated September 25, 2007 was amended to provide for a monthly grant to be paid to ESD 7. This agreement was amended on September 22, 2009, making provisions for up to \$1,500,000 in grants to ESD 7 payable over five years at \$300,000 per year.

The State Comptroller's office confirmed that under state law, they are not permitted to release sales tax figures on individual businesses within a reporting area. Sales tax revenue generated within the ESD but outside the boundaries of the District should be deducted from the sales tax amount due under the agreement, but those amounts were not available from the Comptroller. We verified that there were businesses included on the ESD 7 report that were outside the District boundaries, but were not able to determine whether those amounts would have substantially changed the sales tax calculation. We did note that none of the accounts on the Comptroller's listing outside the District boundaries appear to be major retail businesses.

There are collections reported on the Comptroller's listing for EDZ 2, but the District is not aware of any businesses in that zone. The amounts were included in accordance with the Agreement.

As calculated on Schedule A, the amount currently due to ESD 7 for sales tax totals \$30,542.05.

The attached Schedule B titled "Schedule of Sales Tax Calculation to Comply with the Agreement for Montgomery County Emergency Services District No. 6" sets forth their sales tax calculation. This reimbursement is in accordance with the terms and conditions of an agreement dated June 16, 2009 between the District and ESD 6. An amendment was executed September 10, 2009 to reduce the monthly donation. Under that agreement, beginning July 1, 2010, the monthly donation is based on the greater of \$58,164.33 or .25% sales tax rate collected within District boundaries except where maximum tax rates were collected before the election, and adjusted by amounts collected in Economic Development Zone No. 1 (EDZ 1).

The State Comptroller's office confirmed that under state law, they are not permitted to release sales tax figures on individual businesses within a reporting area. We verified that there were businesses included on the ESD 6 report that were outside the District boundaries, but were not able to determine whether those amounts would have substantially changed the sales tax calculation. We did note that none of the accounts outside the District boundaries on the Comptroller's listing appear to be major retail businesses.

As calculated on Schedule B, five months had sales tax amounts that were less than the minimum, which resulted in an amount due to ESD 6 of \$27,051.13 under the agreement.

Schedule C shows a map of the ESDs and District boundaries prepared by the engineer.

We were not engaged to and did not conduct an audit, the objective of which would be the expression of an opinion on the aforementioned reimbursable costs. Accordingly, we do not express such an opinion. Had we performed additional procedures, other matters might have come to our attention that would have been reported to you.

This report is intended solely for the information and use of the Board of Directors, and is not intended to be and should not be used by anyone other than this specified party. However, this report is a matter of public record and its distribution is not limited. This report should not be associated with the presentation of any financial data of the Authority except to comply with filing requirements of the respective agreements.

We appreciate the opportunity to be of service to you.

McCall Gibson Swedlund Barfoot PLLC
Certified Public Accountants

2012 SALES TAX AUP

EAST MONTGOMERY COUNTY IMPROVEMENT DISTRICT
 Schedule of Sales Tax Calculation to Comply with the Agreement
 For Montgomery County Emergency Services District No. 7
 July 12, 2012

DATE	Collected Sales Tax Amount	Less Within EDZ 2**	Adjusted Sales Tax Amount*	50% of Adjusted Sales Tax Amount (Net .25% Sales Tax)	Date Paid by EMCID	Amount Paid by EMCID	Less Grant Amount	Net Sales Tax Paid	Due TO (From) ESD 7
April 2011	24,925.84	49.36	24,876.48	12,438.24	04/01/11	19,417.00	6,250.00	13,167.00	(728.76)
May 2011	39,812.02	80.00	39,732.02	19,866.01	05/02/11	19,417.00	6,250.00	13,167.00	6,699.01
June 2011	14,428.78	104.79	14,323.99	7,162.00	06/01/11	19,417.00	6,250.00	13,167.00	(6,005.00)
July 2011	20,806.21	183.89	20,622.32	10,311.16	07/01/11	19,417.00	6,250.00	13,167.00	(2,855.84)
Aug 2011	65,545.46	153.41	65,392.05	32,696.02	08/06/11	19,417.00	6,250.00	13,167.00	19,529.02
Sept 2011	23,083.89	154.34	22,929.55	11,464.78	09/01/11	19,417.00	6,250.00	13,167.00	(1,702.22)
Oct 2011	29,119.63	273.85	28,845.78	14,422.89	10/01/11	19,417.00	6,250.00	13,167.00	1,255.89
Nov 2011	37,500.00	203.78	37,296.22	18,648.11	11/01/11	19,417.00	6,250.00	13,167.00	5,481.11
Dec 2011	27,931.59	246.86	27,684.73	13,842.36	11/30/11	319,417.00	300,000.00	13,167.00	675.36
Jan 2012	28,891.61	189.46	28,702.15	14,351.08	12/30/11	19,417.00	6,250.00	13,167.00	1,184.08
Feb 2012	40,231.12	237.53	39,993.59	19,996.79	02/01/12	19,417.00	6,250.00	13,167.00	6,829.79
March 2012	26,879.28	186.06	26,693.22	13,346.61	03/01/12	19,417.00	6,250.00	13,167.00	179.61
	<u>379,155.43</u>	<u>2,063.33</u>	<u>377,092.10</u>	<u>188,546.05</u>		<u>533,004.00</u>	<u>375,000.00</u>	<u>158,004.00</u>	<u>30,542.05</u>

* Includes out of district sales tax revenues outside the boundaries of the District

** Economic Development Zone 2 has no activity, but sales tax collections are reported by the Texas Comptroller's office for that zone

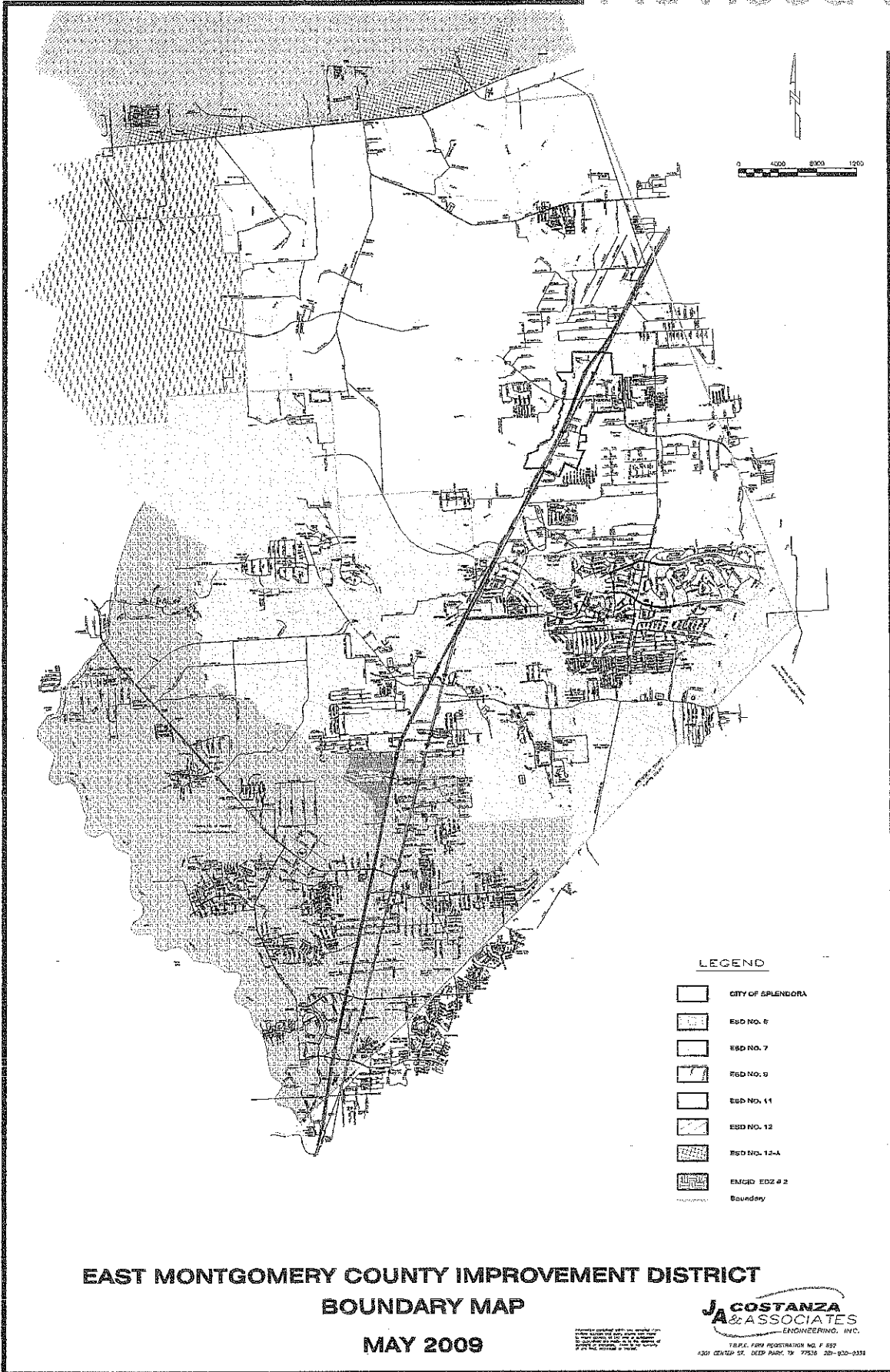
Per the agreement, sales tax is based on what ESD 7 would have received - .25% sales tax up to \$263,000 less EarthQuest Tract (EDZ2) and maximum tax rates effective 4/1/2010. Grants were paid under a separate agreement. See the report for more information.

EAST MONTGOMERY COUNTY IMPROVEMENT DISTRICT
 Schedule of Sales Tax Calculation to Comply with the Agreement
 For Montgomery County Emergency Services District No. 6
 July 12, 2012

DATE	Collected Sales Tax Amount	Less Within EDZ 1	Adjusted Sales Tax Amount*	50% of Adjusted Sales Tax Amount (Net .25% Sales Tax)	Date Paid by EMCID	Amount Pd by EMCID	Amount Greater Than Sales Tax Amount	Due To (From) ESD 6**
April 2011	90,918.53	364.44	90,554.09	45,277.05	04/01/11	58,164.33	(12,887.29)	
May 2011	131,569.79	786.39	130,783.40	65,391.70	05/02/11	58,164.33		7,227.37
June 2011	118,146.33	607.56	117,538.77	58,769.39	06/01/11	58,164.33		605.06
July 2011	97,722.15	546.07	97,176.08	48,588.04	07/01/11	58,164.33	(9,576.29)	
Aug 2011	125,516.47	438.61	125,077.86	62,538.93	08/06/11	58,164.33		4,374.60
Sept 2011	98,814.70	380.95	98,433.75	49,216.88	09/01/11	58,164.33	(8,947.46)	
Oct 2011	93,810.29	111.28	93,699.01	46,849.51	10/01/11	58,164.33	(11,314.83)	
Nov 2011	119,417.15	372.21	119,044.94	59,522.47	11/01/11	58,164.33		1,358.14
Dec 2011	98,999.85	228.23	98,771.62	49,385.81	11/30/12	58,164.33	(8,778.52)	
Jan 2012	101,751.62	284.69	101,466.93	50,733.47	12/30/11	58,164.33	(7,430.87)	
Feb 2012	143,674.08	373.50	143,300.58	71,650.29	02/01/12	58,164.33		13,485.96
March 2012	93,913.80	271.75	93,642.05	46,821.03	03/01/12	58,164.33	(11,343.31)	
	<u>1,314,254.76</u>	<u>4,765.68</u>	<u>1,309,489.08</u>	<u>654,744.54</u>		<u>697,971.96</u>	<u>(70,278.55)</u>	<u>27,051.13</u>

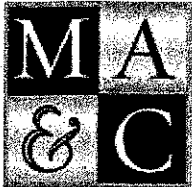
* Includes out of district sales tax revenues outside the boundaries of the District
 ** Five months were less than the monthly minimum, due to ESD 6 in accordance with the agreement

Per the agreement, the monthly sales tax donation is based on the **greater** of \$58,164.33 or .25% sales tax rate for ESD 6 within the District boundaries less maximum tax rates before agreement and EDZ1 effective 7/1/2010.



**EAST MONTGOMERY COUNTY IMPROVEMENT DISTRICT
BOUNDARY MAP
MAY 2009**

J.A. COSTANZA & ASSOCIATES
ENGINEERING, INC.
1806-1808 REGISTRATION NO. F 832
4301 CENTER ST., DEEP POND, TX 77538 281-620-3333



MUNICIPAL ACCOUNTS
& CONSULTING, L.P.

**East Montgomery County
Improvement District**

Bookkeeper's Report

July 12, 2012

East Montgomery County Improvement District

Account Balances

As of July 12, 2012

Financial Institution (Acct Number)	Issue Date	Maturity Date	Interest Rate	Account Balance	Notes
Fund: Operating					
Certificates of Deposit					
ICON BANK (XXXX9033)	04/18/2012	07/18/2012	0.35 %	200,000.00	
BANK OF HOUSTON (XXXX0847)	04/18/2012	08/16/2012	0.50 %	200,000.00	
THE BANK OF RIVER OAKS (XXXX7310)	04/18/2012	09/15/2012	0.25 %	200,000.00	
Money Market Funds					
TEXPOOL (XXXX0001)	10/31/2005		0.12 %	219.25	
PLAINS STATE BANK (XXXX3271)	05/01/2011		0.21 %	308,935.86	Hotel/Motel Tax
Checking Account(s)					
PLAINS STATE BANK (XXXX3263)			0.21 %	226,700.83	Checking Account
Totals for Operating Fund:				\$1,135,855.94	
Fund: Capital Projects					
Money Market Funds					
TEXPOOL (XXXX0004)	05/21/2009		0.12 %	58,010.84	Series 2009
TEXPOOL (XXXX0006)	08/17/2009		0.12 %	36,581.48	Surplus
Checking Account(s)					
PLAINS STATE BANK (XXXX3328)			0.00 %	473.89	Checking Account
Totals for Capital Projects Fund:				\$95,066.21	
Fund: Debt Service					
Certificates of Deposit					
ALLEGIANCE BANK - DEBT (XXXX6901)	08/18/2011	08/01/2012	0.80 %	140,000.00	
GREEN BANK - DEBT (XXXX0092)	04/18/2012	08/01/2012	0.25 %	200,000.00	
ICON BANK - DEBT (XXXX9132)	04/18/2012	08/01/2012	0.35 %	120,000.00	
TEXAS CAPITAL BANK-DEBT (XXXX2877)	04/18/2012	08/01/2012	0.25 %	240,000.00	
Money Market Funds					
TEXPOOL (XXXX0002)	03/13/2009		0.12 %	7,454.96	
Checking Account(s)					
PLAINS STATE BANK (XXXX3417)			0.21 %	279,264.87	Checking Account
Totals for Debt Service Fund:				\$986,719.83	
Fund: Reserve					
Certificates of Deposit					
ICON BANK - DEBT (XXXX1844)	08/16/2011	07/11/2012	0.70 %	110,000.00	
IBC BANK (XXXX1785)	07/16/2011	07/15/2012	0.85 %	240,000.00	
ENTERPRISE BANK (XXXX8681)	07/16/2011	07/16/2012	1.20 %	240,000.00	
BANK OF HOUSTON - DEBT (XXXX0255)	02/10/2012	01/05/2013	0.35 %	200,000.00	
MEMORIAL CITY BANK (XXXX3065)	01/12/2012	01/11/2013	0.85 %	240,000.00	
Money Market Funds					
TEXPOOL (XXXX0005)	07/07/2009		0.12 %	4,699.65	Debt Reserve
Totals for Reserve Fund:				\$1,034,699.65	

East Montgomery County Improvement District

Account Balances

As of July 12, 2012

Financial Institution (Acct Number)	Issue Date	Maturity Date	Interest Rate	Account Balance	Notes
F. Events Account					
Certificates of Deposit					
POST OAK BANK (XXXX6838)	09/12/2011	09/12/2012	0.75 %	50,000.00	
Checking Account(s)					
PLAINS STATE BANK (XXXX3468)			0.21 %	18,936.40	Checking Account
Totals for Events Account Fund:				\$68,936.40	
Grand total for East Montgomery County Improvement District:				\$3,321,278.03	

EMCID - GOF
Cash Flow Report - Checking Account
As of July 12, 2012

Num	Name	Memo	Amount	Bal
BALANCE AS OF 6/15/2012				\$423,840.17
Receipts				
	Refund - Spirit Exposition Services		50.00	
	Building Rents - Lone Star College		4,000.00	
	Interest Eamed on Checking		<u>118.11</u>	
Total Receipts				4,168.11
Disbursements				
9669	Marks, Richardson P.C.	VOID: S26,436.27 6320 / 7106 / 7320 / Legal Fe	0.00	
9673	Marks, Richardson P.C.	6320 / 7106 / 7320 / Legal Fees	(23,860.77)	
9674	+ImageNet Consulting LLC	6132 · Office Equipment Lease	(530.83)	
9675	Continental Airlines - Chase Card Service	7122 / 6310 / 7100 / 6133	(660.70)	
9676	Entergy	6352 · Utilities	(8,826.38)	
9677	Labor Ready Central, Inc.	6372 B · Contract Labor Maintenance	(1,608.42)	
9678	Locke Lord LLP	6320 · Legal Fees	(2,322.40)	
9679	Network PC Pro's	6133 · Computers/Access/Software, etc	(1,014.00)	
9680	Ozarka	6340 · Supplies	(327.57)	
9681	Petty Cash	6310 / 6336 / 6340 / 6352 / 6371 / 7100	(856.50)	
9682	TDG General Contractors, Inc.	7004 · Com Dev - Special Events	(3,104.00)	
9683	Top Flight Trailer & Equipment	6336 · Grounds Maintenance	(36.09)	
9684	Wal-Mart	6011 · Salaries	(1,000.00)	
9685	Allied Power Mart	7306 · Building Improvements - Capital	(10,600.00)	
9686	APS Safety and Medical, Inc.	6338 · Pond Care	(183.00)	
9687	Assurity Life Insurance Company	6016 · Health Insurance	(607.30)	
9688	AT&T Mobility	6351 · Telephone Expense	(139.57)	
9689	CenturyLink	6351 · Telephone Expense	(1,896.16)	
9690	CenturyLink 4419	6351 · Telephone Expense	(998.19)	
9691	Champion Image Inc.	7100 · Eco Dev - Marketing	(300.00)	
9692	Community Hardware	6370 · Repairs & Maint - Building	(102.16)	
9693	Complete Facilities Management LLC	6335 · Bldg. Maintenance Contract	(1,999.50)	
9694	Continental Airlines - Chase Card Service	6340 / 6311 / 6359 / 7004 / 7100 / 6350	(98.27)	
9695	Home Depot Credit Services	6370 · Repairs & Maint - Building	(112.70)	
9696	ImageNet Consulting, Inc.	6132 · Office Equipment Lease	(597.99)	
9697	International Council of Shopping	6096 · Dues/ Professional Memberships	(50.00)	
9698	J. A. Costanza & Associates, Inc.	6322 / 7322 / Engineering Fees	(3,174.00)	
9699	Jack Daniels Delivery Service, Inc.	6344 · Delivery Fees	(42.70)	
9700	Labor Ready Central, Inc.	6372 B · Contract Labor Maintenance	(3,238.56)	
9701	Marks, Richardson P.C.	6320 / 7106 / 7320 / Legal Fees	(15,285.62)	
9702	Network PC Pro's	6133 · Computers/Access/Software, etc	(700.00)	
9703	New Caney MUD	6352 · Utilities	(248.52)	
9704	Office Depot	6340 · Supplies	(94.25)	
9705	Pitney Bowes, Inc. - Lease	6132 · Office Equipment Lease	(189.50)	
9706	Platinum Coffee Service, Inc.	6340 · Supplies	(83.50)	
9707	Sandra Seelye	6351 / 6030	(92.02)	
9708	Sprint 13158848	6351 · Telephone Expense	(49.12)	
9709	Suzanne Parmer	6030 / 6351 / 6312	(194.14)	
9710	The Filter Man LTD	6370 · Repairs & Maint - Building	(177.00)	
9711	TML - IEBP	6016 · Health Insurance	(6,854.29)	
9712	Tractor Supply	6371 · Building Supplies	(249.99)	
9713	Txtreme Promotions	7100 · Eco Dev - Marketing	(375.00)	
9714	Warren Mather	6030 · Mileage/Auto	(43.68)	
PR Entry	The Hartford	Pay Period 06/01-15/2012	(1,842.23)	

EMCID - GOF
Cash Flow Report - Checking Account
 As of July 12, 2012

Name	Memo	Amount	Balance
Disbursements			
PR Entry Payroll Entry	Pay Period 06/01-15/2012	(8,253.61)	
PR Entry Payroll Entry	Pay Period 06/01-15/2012	(2,184.13)	
PR Entry Payroll Entry	Pay Period 06/01-15/2012	(99.85)	
PR Entry The Hartford	Pay Period 06/16-30/2012	(1,834.89)	
PR Entry Payroll Entry	Pay Period 06/16-30/2012	(111.24)	
PR Entry Payroll Entry	Pay Period 06/16-30/2012	(12,693.45)	
PR Entry Payroll Entry	Pay Period 06/16-30/2012	(3,782.33)	
Wire Montgomery Co. ESD # 6 - Porter Fire Dept	7000 6 · Montgomery Count ESD # 6 Porter Fire	(58,164.33)	
Wire Montgomery Co. ESD # 7	7000 7 · Montgomery Count ESD # 7	(19,417.00)	
Total Disbursements			<u>(201,307.45)</u>
BALANCE AS OF 7/12/2012			<u><u>\$226,700.83</u></u>

EMCID - GOF
Profit & Loss Budget Performance
June 2012

	Jun 12	Budget	\$ Over Budget	Jul '11 - Jun 12	YTD Budget	\$ Over Budget	Annual Budget
Ordinary Income/Expense							
Income							
13600 - Reimb from E MUJ 3 Bond							
14000 - Income							
14001 - Sales Tax Revenue	442,996	425,000	17,996	422,145	495,000	-72,855	495,000
14002 - Hotel / Motel Tax	10,234	7,083	3,150	5,297,980	5,100,000	197,980	5,100,000
14401 - Interest Earned on Temp. Invest	62	833	-772	1,456	10,000	-8,544	85,000
15380 - Miscellaneous Income	118	10,000	-10,000	3,586	10,000	-6,414	10,000
15392 - Interest Earned on Checking Acc		83	35	1,153	1,000	153	1,000
Total 14000 - Income	453,409	443,000	10,409	5,407,471	5,206,000	201,471	5,206,000
14104 - Reserve For Land Purchase	0	0	0	0	0	0	0
14300 - EMCID Office Bldg Revenue	8,000	4,000	4,000	48,000	48,000	0	48,000
14303 - Building Rents - College	0	0	0	0	3,000	-3,000	3,000
14304 - Events Revenue	8,000	4,000	4,000	48,000	51,000	-3,000	51,000
Total 14300 - EMCID Office Bldg Revenue	461,409	447,000	14,409	5,877,616	5,752,000	125,616	5,752,000
Total Income							
Expense							
16000 - Administrative Expense							
16011 - Salaries	28,738	28,333	404	300,366	340,000	-39,634	340,000
16012 - Payroll Taxes	1,980	2,167	-186	19,397	26,000	-6,603	26,000
16013 - Annual Benefits	0	500	-500	5,500	6,000	-500	6,000
16014 - Payroll Charges - Paychex / Adm	211	225	-14	2,654	2,700	-46	2,700
16015 - Retirement	1,081	1,417	-336	13,170	17,000	-3,830	17,000
16016 - Health Insurance	-1,351	6,000	-7,351	50,927	72,000	-21,073	72,000
16017 - Worker's Compensation	0	0	0	0	2,500	-2,500	2,500
16030 - Mileage/Auto	1,934	2,500	-566	25,993	30,000	-4,007	30,000
16096 - Dues/Professional Memberships	600	1,000	-400	12,114	12,000	114	12,000
16097 - Professional Memberships	0	0	0	0	0	0	0
16098 - Subscriptions	217	417	-200	1,532	5,000	-3,468	5,000
16132 - Office Equipment Lease	1,121	917	204	6,638	11,000	-4,362	11,000
16133 - Computers/Access/Software, etc	731	1,667	-936	17,778	20,000	-2,222	20,000
16310 - Travel / Training / President CEO	107	3,750	-3,643	18,565	45,000	-26,435	45,000
16311 - Travel / Training - Board Members	461	3,750	-3,289	42,586	45,000	-2,414	45,000
16312 - Travel / Training Staff	86	2,083	-1,998	23,139	25,000	-1,861	25,000
16320 - Legal Fees	14,015	7,917	6,098	109,250	95,000	14,250	95,000
16321 - Advertising	0	2,083	-2,083	14,901	25,000	-10,099	25,000
16322 - Auditing Fees	0	0	0	13,100	15,000	-1,900	15,000
16323 - Financial Advisor	0	583	-583	1,980	7,000	-5,020	7,000
16324 - Engineering Fees	4,236	2,750	1,486	71,723	33,000	38,723	33,000
16325 - Election Expense	84	0	84	28,292	20,000	8,292	20,000
16333 - Accounting	0	2,083	-2,083	39,092	25,000	14,092	25,000
16340 - Supplies	1,423	1,000	423	8,425	12,000	-3,575	12,000
16341 - Printing	108	833	-725	702	10,000	-9,298	10,000
16342 - Legal Notices & Publications	0	83	-83	75	1,000	-925	1,000
16344 - Delivery Fees	43	500	-457	8,381	6,000	2,381	6,000
16380 - Postage	39	667	-628	1,992	8,000	-6,008	8,000
16351 - Telephone Expense	3,254	2,500	754	33,849	30,000	3,849	30,000
16359 - Miscellaneous	1,177	1,667	-489	15,736	20,000	-4,264	20,000
16360 - Bank Service Charges	0	0	0	129	0	129	0
16600 - Payroll Expenses	0	0	0	0	0	0	0
Total 16000 - Administrative Expense	60,293	77,392	-17,099	887,986	966,200	-78,214	966,200

11:00 AM

07/06/12

Accrual Basis

EMCID - GOF

Profit & Loss Budget Performance

June 2012

	Jun 12	Budget	\$ Over Budget	Jul '11 - Jun 12	YTD Budget	\$ Over Budget	Annual Budget
16200 - Building Expense							
16319 - Legal Fees - Building	0	417	-417	0	5,000	-5,000	5,000
16335 - Bldg. Maintenance Contract	2,000	1,500	500	70,111	18,000	52,111	18,000
16336 - Grounds Maintenance	780	1,667	-887	7,767	20,000	-12,233	20,000
16337 - Security	0	583	-583	3,426	7,000	-3,574	7,000
16338 - Pond Care	0	83	-83	659	1,000	-341	1,000
16352 - Utilities	8,829	8,750	79	102,750	105,000	-2,250	105,000
16361 - Insurance - Building	0	0	0	27,431	41,000	-13,569	41,000
16362 - Miscellaneous - Building	0	83	-83	0	1,000	-1,000	1,000
16366 - Waste Removal	0	250	-250	2,930	3,000	-70	3,000
16367 - Pest Control	0	83	-83	727	1,000	-273	1,000
16368 - Chemicals	0	42	-42	0	500	-500	500
16370 - Repairs & Maint - Building	1,804	5,000	-3,196	80,283	60,000	20,283	60,000
16371 - Building Supplies	118	333	-216	2,530	4,000	-1,470	4,000
16372 - Contract Labor							
16372 a - Janitorial	1,900	1,917	-17	23,377	23,000	377	23,000
16372 b - Maintenance	6,499	6,667	-168	95,452	80,000	15,452	80,000
16372 - Contract Labor - Other	0	0	0	0	0	0	0
Total 16372 - Contract Labor	8,399	8,583	-185	118,828	103,000	15,828	103,000
16373 - Events Acct Expenditures	0	208	-208	25	2,500	-2,475	2,500
16374 - Capital Items	0	83	-83	0	1,000	-1,000	1,000
17306 - Building Improvements - Capital	0	83	-83	0	1,000	-1,000	1,000
16200 - Building Expense - Other	0	0	0	0	0	0	0
Total 16200 - Building Expense	21,930	27,750	-5,820	417,468	374,000	43,468	374,000
17000 - Community Development							
17000 6 - ESD # 6	58,164	58,167	-3	697,972	698,000	-28	698,000
17000 7 - ESD # 7	19,417	19,417	0	533,004	533,000	4	533,000
17000 11 - ESD 11	0	0	0	100,000	100,000	0	100,000
17001 - Com Dev - Administrative	0	42	-42	0	500	-500	500
17002 - Com Dev - Legal Fees	1,693	417	1,276	1,693	5,000	-3,308	5,000
17004 - Com Dev - Special Events	3,883	12,500	-8,617	190,212	150,000	40,212	150,000
17008 - Community Development - Grants	0	20,833	-20,833	243,582	250,000	-6,418	250,000
17010 - Com Dev - Projects	0	0	0	0	0	0	0
17011 - Scholarship Program	0	0	0	620,920	600,000	20,920	600,000
17000 - Community Development - Other	0	0	0	0	0	0	0
Total 17000 - Community Development	83,157	111,375	-28,218	2,387,382	2,336,500	50,882	2,336,500
17200 - Economic Development Exp							
17100 - Eco Dev - Marketing	-117	9,167	-9,284	76,676	110,000	-33,324	110,000
17106 - Eco Dev - Legal	0	2,500	-2,500	20,987	30,000	-9,013	30,000
17120 - Legal for Land/Bldg/Industrial	0	1,667	-1,667	60,603	20,000	40,603	20,000
17122 - Eng Fees - Industrial Pk	1,951	1,667	284	1,951	20,000	-18,049	20,000
17130 - Economic Dev	0	0	0	1,000	0	1,000	0
17680 - Industrial Park Capital Improv	0	833	-833	0	10,000	-10,000	10,000
17200 - Economic Development Exp - Other	0	333	-333	0	4,000	-4,000	4,000
Total 17200 - Economic Development Exp	1,834	16,167	-14,333	161,216	194,000	-32,784	194,000
17300 - Building - Debt Service Exp							
17302 - Building Payment	75,426	90,000	-14,574	924,847	1,080,000	-155,153	1,080,000
17300 - Building - Debt Service Exp - Other	0	0	0	0	0	0	0
Total 17300 - Building - Debt Service Exp	75,426	90,000	-14,574	924,847	1,080,000	-155,153	1,080,000
17500 - Capital Outlay	0	0	0	0	0	0	0

11:00 AM
07/06/12
Accrual Basis

EMCID - GOF Profit & Loss Budget Performance June 2012

	Jun 12	Budget	\$ Over Budget	Jul '11 - Jun 12	YTD Budget	\$ Over Budget	Annual Budget
17800 - Savings Expenditures	0	10,358	-10,358	0	-124,300	-124,300	124,300
Total Expense	242,640	333,042	-90,402	4,778,900	5,075,000	-296,100	5,075,000
Net Ordinary Income	218,769	113,958	104,811	1,098,717	677,000	421,717	677,000
Other Income/Expense							
Other Expense							
17400 - Earth Quest							
17131 - Eco Dey - Project Rex	0	3,333	-3,333	0	40,000	-40,000	40,000
17160 - Other Exp - Project Rex	0	0	0	0	0	0	0
17180 - Earth Quest	181	8,334	-8,153	132,061	100,000	32,061	100,000
17322 - Engineering - Earth Quest	128	1,250	-1,122	2,622	15,000	-12,378	15,000
17632 - Legal - Earth Quest	1,598	2,500	-902	78,764	30,000	48,764	30,000
17400 - Earth Quest - Other	0	417	-417	0	5,000	-5,000	5,000
Total 17400 - Earth Quest	1,906	15,834	-13,928	213,447	190,000	23,447	190,000
17510 - Industrial Pk Land Purchase							
17510 a - Industrial Park Land Sale	0	0	0	-114,800	-300,000	185,200	-300,000
17510 - Industrial Pk Land Purchase - Other	0	0	0	794,684	787,000	7,684	787,000
Total 17510 - Industrial Pk Land Purchase	0	0	0	679,884	487,000	192,884	487,000
Total Other Expense	1,906	15,834	-13,928	893,331	677,000	216,331	677,000
Net Other Income	-1,906	-15,834	13,928	-893,331	-677,000	-216,331	-677,000
Net Income	216,863	98,124	118,739	205,386	0	205,386	0

EMCID - CPF
Cash Flow Report - Checking Account
As of July 12, 2012

Name	Memo	Amount	Balance
BALANCE AS OF 6/15/2012			\$463.89
Receipts			
Reverse Bank Service Charge		<u>10.00</u>	
Total Receipts			10.00
Disbursements			
No Disbursements Activity		<u>0.00</u>	
Total Disbursements			<u>0.00</u>
BALANCE AS OF 7/12/2012			<u><u>\$473.89</u></u>

East Montgomery County Improvement District

Summary of Pledged Securities

As of July 12, 2012

Financial Institution: ALLEGIANCE BANK - DEBT		
Total CDs, MM:	\$140,000.00	Collateral Security Required: No
Less FDIC coverage:	\$250,000.00	Collateral Security Agreement On File: No
Total pledged securities:	\$0.00	Investment Policy Received: Yes
Ratio of pledged securities to investments:	N/A	
Financial Institution: BANK OF HOUSTON		
Total CDs, MM:	\$200,000.00	Collateral Security Required: No
Less FDIC coverage:	\$250,000.00	Collateral Security Agreement On File: No
Total pledged securities:	\$0.00	Investment Policy Received: Yes
Ratio of pledged securities to investments:	N/A	
Financial Institution: BANK OF HOUSTON - DEBT		
Total CDs, MM:	\$200,000.00	Collateral Security Required: No
Less FDIC coverage:	\$250,000.00	Collateral Security Agreement On File: No
Total pledged securities:	\$0.00	Investment Policy Received: Yes
Ratio of pledged securities to investments:	N/A	
Financial Institution: ENTERPRISE BANK		
Total CDs, MM:	\$240,000.00	Collateral Security Required: No
Less FDIC coverage:	\$250,000.00	Collateral Security Agreement On File: No
Total pledged securities:	\$0.00	Investment Policy Received: Yes
Ratio of pledged securities to investments:	N/A	
Financial Institution: GREEN BANK - DEBT		
Total CDs, MM:	\$200,000.00	Collateral Security Required: No
Less FDIC coverage:	\$250,000.00	Collateral Security Agreement On File: No
Total pledged securities:	\$0.00	Investment Policy Received: Yes
Ratio of pledged securities to investments:	N/A	
Financial Institution: IBC BANK		
Total CDs, MM:	\$240,000.00	Collateral Security Required: No
Less FDIC coverage:	\$250,000.00	Collateral Security Agreement On File: No
Total pledged securities:	\$0.00	Investment Policy Received: Yes
Ratio of pledged securities to investments:	N/A	
Financial Institution: ICON BANK		
Total CDs, MM:	\$200,000.00	Collateral Security Required: No
Less FDIC coverage:	\$250,000.00	Collateral Security Agreement On File: No
Total pledged securities:	\$0.00	Investment Policy Received: Yes
Ratio of pledged securities to investments:	N/A	
Financial Institution: MEMORIAL CITY BANK		
Total CDs, MM:	\$240,000.00	Collateral Security Required: No
Less FDIC coverage:	\$250,000.00	Collateral Security Agreement On File: No
Total pledged securities:	\$0.00	Investment Policy Received: Yes
Ratio of pledged securities to investments:	N/A	

East Montgomery County Improvement District

Summary of Pledged Securities

As of July 12, 2012

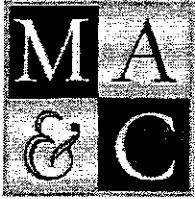
Financial Institution: PLAINS STATE BANK (Depository Bank)		
Total CDs, MM, and Checking Accounts:	\$834,311.85	Collateral Security Required: Yes
Less FDIC coverage:	\$250,000.00	Collateral Security Agreement On File: Yes
Total pledged securities:	\$2,707,673.36	Investment Policy Received: Yes
Ratio of pledged securities to investments:	463.39 %	
Financial Institution: POST OAK BANK		
Total CDs, MM:	\$50,000.00	Collateral Security Required: No
Less FDIC coverage:	\$250,000.00	Collateral Security Agreement On File: No
Total pledged securities:	\$0.00	Investment Policy Received: Yes
Ratio of pledged securities to investments:	N/A	
Financial Institution: TEXAS CAPITAL BANK-DEBT		
Total CDs, MM:	\$240,000.00	Collateral Security Required: No
Less FDIC coverage:	\$250,000.00	Collateral Security Agreement On File: No
Total pledged securities:	\$0.00	Investment Policy Received: Yes
Ratio of pledged securities to investments:	N/A	
Financial Institution: TEXPOOL		
Total CDs, MM:	\$106,966.18	Collateral Security Required: No
Less FDIC coverage:	\$0.00	Collateral Security Agreement On File: No
Total pledged securities:	\$0.00	Investment Policy Received: Yes
Ratio of pledged securities to investments:	N/A	
Financial Institution: THE BANK OF RIVER OAKS		
Total CDs, MM:	\$200,000.00	Collateral Security Required: No
Less FDIC coverage:	\$250,000.00	Collateral Security Agreement On File: No
Total pledged securities:	\$0.00	Investment Policy Received: Yes
Ratio of pledged securities to investments:	N/A	

East Montgomery County Improvement District

District Debt Service Payments

07/01/2012 - 06/30/2013

<u>Paying Agent</u>	<u>Series</u>	<u>Date Due</u>	<u>Date Paid</u>	<u>Principal</u>	<u>Interest</u>	<u>Total Dr</u>
Debt Service Payment Due 08/15/2012						
WELLS FARGO BANK, NA	2009	08/15/2012		65,000.00	243,753.13	308,753.13
WELLS FARGO BANK, NA	2010R	08/15/2012		360,000.00	61,090.63	421,090.63
		Total Due 08/15/2012		425,000.00	304,843.76	729,843.76
Debt Service Payment Due 02/15/2013						
WELLS FARGO BANK, NA	2009	02/15/2013	01/25/2012	0.00	241,803.13	241,803.13
WELLS FARGO BANK, NA	2010R	02/15/2013	01/25/2012	0.00	57,490.63	57,490.63
		Total Due 02/15/2013		0.00	299,293.76	299,293.76
		District Total		\$425,000.00	\$604,137.52	\$1,029,137.52



MUNICIPAL ACCOUNTS
& CONSULTING, L.P.

East Montgomery County Improvement District

Supplemental

Bookkeeper's Report

July 12, 2012

East Montgomery County Improvement District

Account Balances

As of July 12, 2012

Financial Institution (Acct Number)	Issue Date	Maturity Date	Interest Rate	Account Balance	Notes
Fund: Operating					
Certificates of Deposit					
ICON BANK (XXXX9033)	04/18/2012	07/18/2012	0.35 %	200,000.00	
BANK OF HOUSTON (XXXX0847)	04/18/2012	08/16/2012	0.50 %	200,000.00	
THE BANK OF RIVER OAKS (XXXX7310)	04/18/2012	09/15/2012	0.25 %	200,000.00	
IBC BANK (XXXX1103)	07/10/2012	10/08/2012	0.25 %	50,000.00	
IBC BANK (XXXX1081)	07/10/2012	11/07/2012	0.30 %	50,000.00	
Money Market Funds					
TEXPOOL (XXXX0001)	10/31/2005		0.14 %	219.25	
PLAINS STATE BANK (XXXX3271)	05/01/2011		0.21 %	308,935.86	Hotel/Motel Tax
Checking Account(s)					
PLAINS STATE BANK (XXXX3263)			0.21 %	560,618.82	Checking Account
Totals for Operating Fund:				\$1,569,773.93	
Fund: Capital Projects					
Money Market Funds					
TEXPOOL (XXXX0004)	05/21/2009		0.14 %	58,010.84	Series 2009
TEXPOOL (XXXX0006)	08/17/2009		0.14 %	36,581.48	Surplus
Checking Account(s)					
PLAINS STATE BANK (XXXX3328)			0.00 %	473.89	Checking Account
Totals for Capital Projects Fund:				\$95,066.21	
Fund: Debt Service					
Certificates of Deposit					
ALLEGIANCE BANK - DEBT (XXXX6901)	08/18/2011	08/01/2012	0.80 %	140,000.00	
GREEN BANK - DEBT (XXXX0092)	04/18/2012	08/01/2012	0.25 %	200,000.00	
ICON BANK - DEBT (XXXX9132)	04/18/2012	08/01/2012	0.35 %	120,000.00	
TEXAS CAPITAL BANK-DEBT (XXXX2877)	04/18/2012	08/01/2012	0.25 %	240,000.00	
BANK OF TEXAS - DEBT (XXXX9763)	07/11/2012	01/07/2013	0.20 %	125,000.00	
Money Market Funds					
TEXPOOL (XXXX0002)	03/13/2009		0.14 %	7,454.96	
Checking Account(s)					
PLAINS STATE BANK (XXXX3417)			0.21 %	279,264.87	Checking Account
Totals for Debt Service Fund:				\$1,111,719.83	
Fund: Reserve					
Certificates of Deposit					
ICON BANK - DEBT (XXXX1844)	08/16/2011	07/11/2012	0.70 %	110,000.00	
IBC BANK (XXXX1785)	07/16/2011	07/15/2012	0.85 %	240,000.00	
ENTERPRISE BANK (XXXX8681)	07/16/2011	07/16/2012	1.20 %	240,000.00	
BANK OF HOUSTON - DEBT (XXXX0255)	02/10/2012	01/05/2013	0.35 %	200,000.00	
MEMORIAL CITY BANK (XXXX3065)	01/12/2012	01/11/2013	0.85 %	240,000.00	
Money Market Funds					
TEXPOOL (XXXX0005)	07/07/2009		0.14 %	4,699.65	Debt Reserve

East Montgomery County Improvement District

Account Balances

As of July 12, 2012

Financial Institution (Acct Number)	Issue Date	Maturity Date	Interest Rate	Account Balance	Notes
Totals for Reserve Fund:				\$1,034,699.65	
Fund: Events Account					
Certificates of Deposit					
POST OAK BANK (XXXX6838)	09/12/2011	09/12/2012	0.75 %	50,000.00	
Checking Account(s)					
PLAINS STATE BANK (XXXX3468)			0.21 %	18,936.40	Checking Account
Totals for Events Account Fund:				\$68,936.40	
Grand total for East Montgomery County Improvement District:				\$3,880,196.02	

EMCID - GOF
Cash Flow Report - Checking Account
 As of July 12, 2012

Num	Name	Memo	Amount	Balance
BALANCE AS OF 7/7/2012				\$229,162.83
Receipts				
	Sales Tax Revenue		19,251.54	
	Sales Tax Revenue District A		<u>406,951.57</u>	
Total Receipts				426,203.11
Disbursements				
9678	Locke Lord LLP	VOID: \$2,322.40 6320 · Legal Fees	0.00	
9688	AT&T Mobility	VOID: \$139.57 6351 · Telephone Expense	0.00	
9715	Frank McCrady	6351 · Telephone Expense - Reimbursement	(331.36)	
9716	Montgomery County Election Administration	6325 - Election Expense	(11,390.00)	
9717	EMCID - DSF	7302 · Debt Service Transfer Building Payment	(78,000.00)	
9718	American Express - McCrady	6310 · Travel / Training President CEO	(16.01)	
9719	Carrier Corporation	6370 · Repairs & Maint - Building	(2,634.00)	
9720	Houston Community Newspapers	6321 · Advertising	(890.52)	
9721	Labor Ready Central, Inc	6372 B · Contract Labor Maintenance	<u>(1,485.23)</u>	
Total Disbursements				<u>(94,747.12)</u>
BALANCE AS OF 7/12/2012				<u><u>\$560,618.82</u></u>